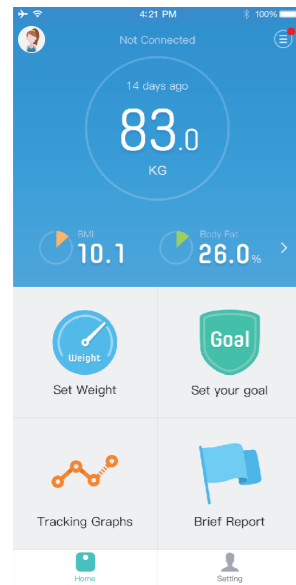


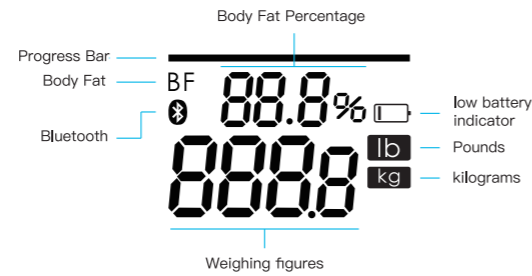
YUNMAI App

Easy life, lighter! Using YUNMAI Color together with the App, you can not only record exercise consumption, food intake and other basic information, but also track your weight trends. YUNMAI helps to analyze on the Cloud and provide health reports and improvement recommendations.



Notice: Due to the frequent updates of YUNMAI App, this picture is for reference only. Please adhere to the real products in case of any change!

Display screen



Body Mass Index comparison table

BMI (for men and women)					
Age	Underweight	Normal	Overweight	Obese	Grossly Overweight
18-120	< 18.5	18.5-24.9	25-29.9	30-34.9	≥ 35

Body mass index (BMI) = weight (kg) ÷ height ^ 2 (m)
For example: BMI = 70kg ÷ (1.75m × 1.75m) = 22.86, belongs to the normal range.
Note: BMI Index is a standard that is widely used to judge a person's health condition.

Mobile Device Support

iOS 8.0 and above, iPhone 5 and above
iPod touch
Android 4.3 and above with Bluetooth 4.0

Maintenance

Use a wet cloth to clean the scale. Do not use any detergent and don't use water to wash it directly.

Warranty

YUNMAI Color guarantees a year of technical support and hardware warranty.

Warning

Do not disassemble, squeeze, puncture the product or put it into water, fire, or exposes it to temperature higher than 60 ° C (140 ° F).

Important

Use the YUNMAI Smart Scale while barefoot. The scale cannot measure body fat percentage if you are wearing shoes or socks. YUNMAI Smart Scale should not be used to diagnose or treat any medical situation.

Read this manual before use. keep it for future reference

Intended Use: YUNMAI Smart Scale is a digital monitor intended for use in measuring weight and body fat mass in generally healthy adults beyond 18 years old. It is intended for use at home/domestic setting only.

FCC Statement

FCC ID: 2ADEB-M1302

This equipment has been tested and found to comply with the limits for a Class B digital device, pursuant to Part 15 of the FCC Rules. These limits are designed to provide reasonable protection against harmful interference in a residential installation. This equipment generates uses and can radiate radio frequency energy and, if not installed and used in accordance with the instructions, may cause harmful interference to radio communications. However, there is no guarantee that interference will not occur in a particular installation. If this equipment does cause harmful interference to radio or television reception, which can be determined by turning the equipment off and on, the user is encouraged to try to correct the interference by one or more of the following measures:

- Reorient or relocate the receiving antenna.
- Increase the separation between the equipment and receiver.
- Connect the equipment into an outlet on a circuit different from that to which the receiver is connected.
- Consult the dealer or an experienced radio/TV technician for help.

This device complies with part 15 of the FCC Rules. Operation is subject to the following two conditions:

- (1) This device may not cause harmful interference.
- (2) This device must accept any interference received, including interference that may cause undesired operation.

Changes or modifications not expressly approved by the party responsible for compliance could void the user's authority to operate the equipment.

Product Specifications

Product Name: YUNMAI Color Smart Scale
Model: M1302
Measurement Unit: Kg / Lb
Connection: Bluetooth 4.0
Size: 327 × 327 × 31 mm
Executive Standard: Q / HC 1 - 2015
Net Weight: 2.125 Kg
Weighing Range: 3 - 180 Kg
Accuracy: ±50g
Working Temperature: -5 °C - 40 °C
Exterior Material: Eco-friendly ABS
Power: 1.5V AAA Battery x 4

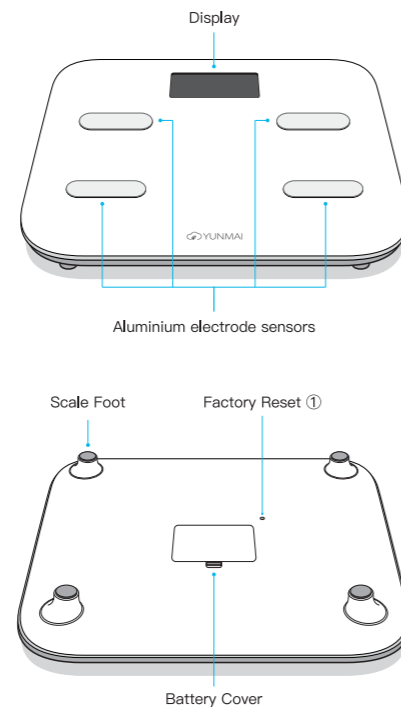
For more information please visit www.iyunmai.com
Hotline: +86-755-8671-6230
Facebook: www.facebook.com/iyunmai
Twitter: twitter.com/YunmaiGlobal
Manufacturer: Shenzhen YUNMAI Technology Co., Ltd
Address: Room 10D, 10F, 4C Building, Software Industry Base, Nanshan District, Shenzhen, China

YUNMAI color Smart Scale Instructions



Product Introduction and Installation

Thank you for choosing YUNMAI Color smart scale.

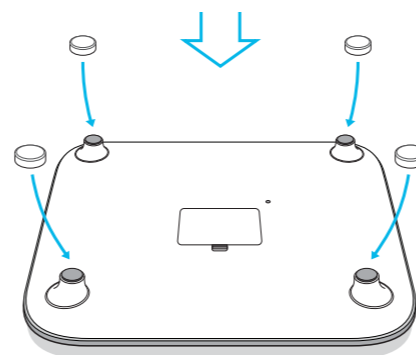


① Important! The factory reset must be used for assembly by staffs only.

Add the foot pads for use on carpet.



If using on a carpet, please add the 4 footpads provided.



1 Install YUNMAI App on your phone

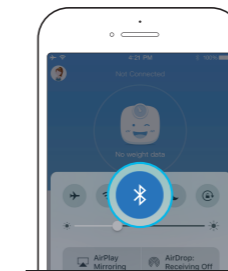
Search "YUNMAI" in the Android Application Market or the iOS App Store or scan the following QR Code to download, install it and it will get connected to the scale once turned on.



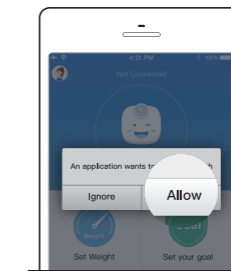
Scan QR code
Download <YUNMAI App>

2 Connect to the scale via Bluetooth

Open YUNMAI App and Bluetooth and it will get connected automatically, and your real-time data will sync to the App.



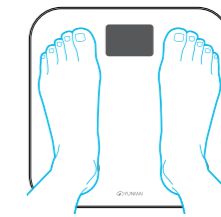
iOS: Slide from the bottom of the screen to open the Control Center and click on the [Bluetooth] Logo



Android: Click on [Allow] to turn on Bluetooth when the system reminds you when open YUNMAI App

4 Start Using

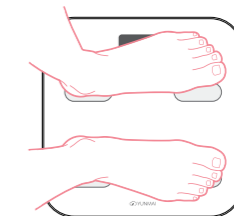
Set each foot on each side of the central point naturally as shown below:



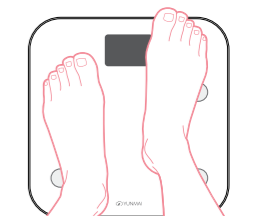
Correct
Each foot on each side of the central point naturally



Wrong
Feet go out of the verge may affect the accuracy



Wrong
Stand in wrong direction will shield the screen



Wrong
Feet not in a line may affect the accuracy

Note: To ensure the accuracy please stand on the scale barefoot with the right posture.